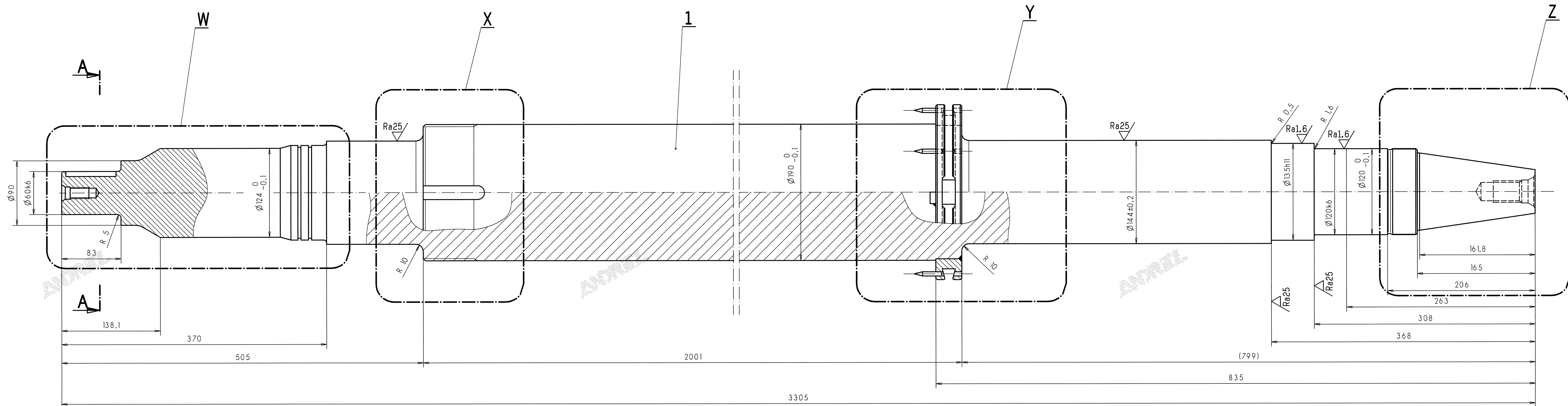


Ra6.3/ (Ra25/ , Ra1.6/)



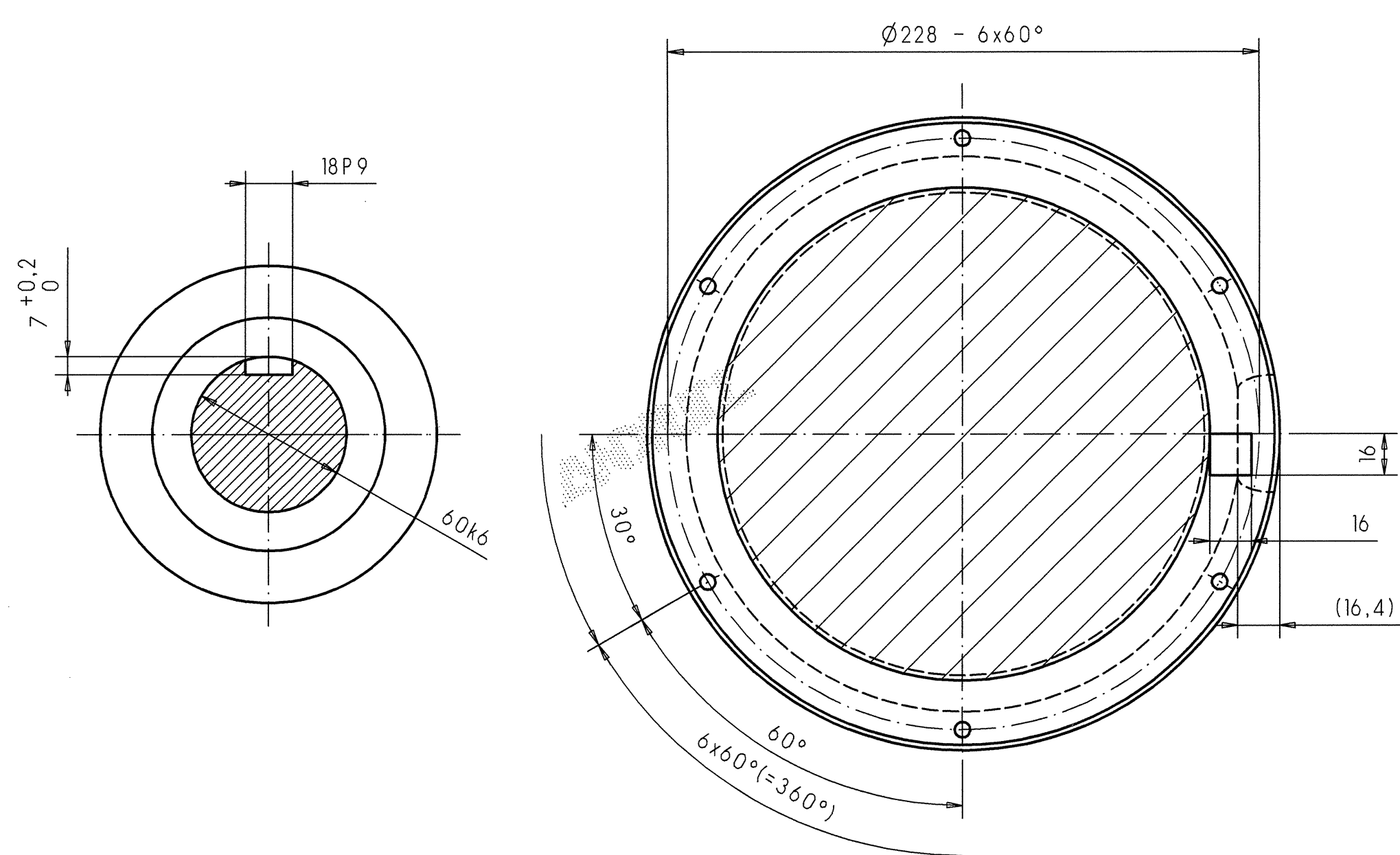
section A-A
1: 2

section B-B
1: 2

section C-C
1: 2

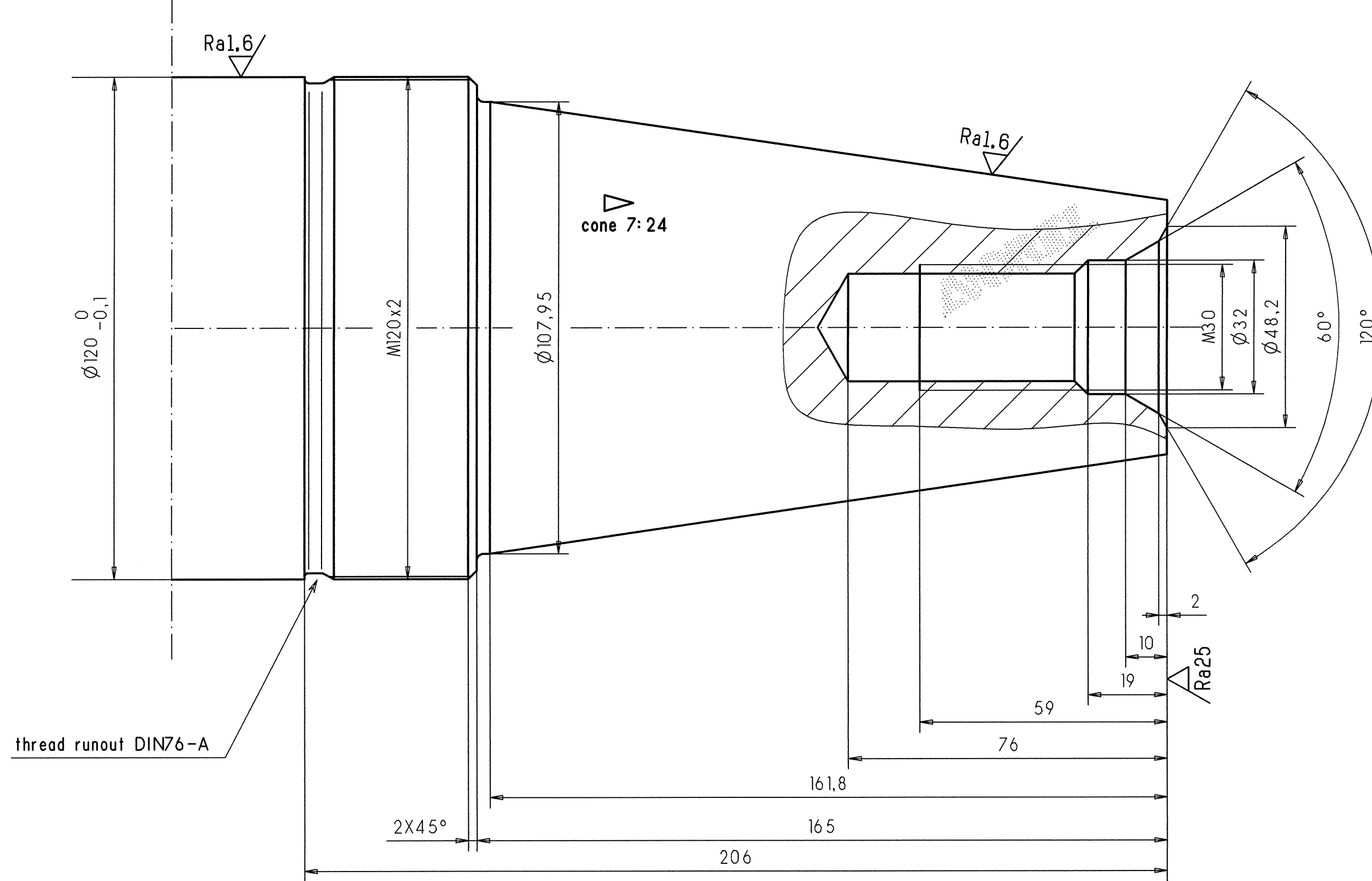
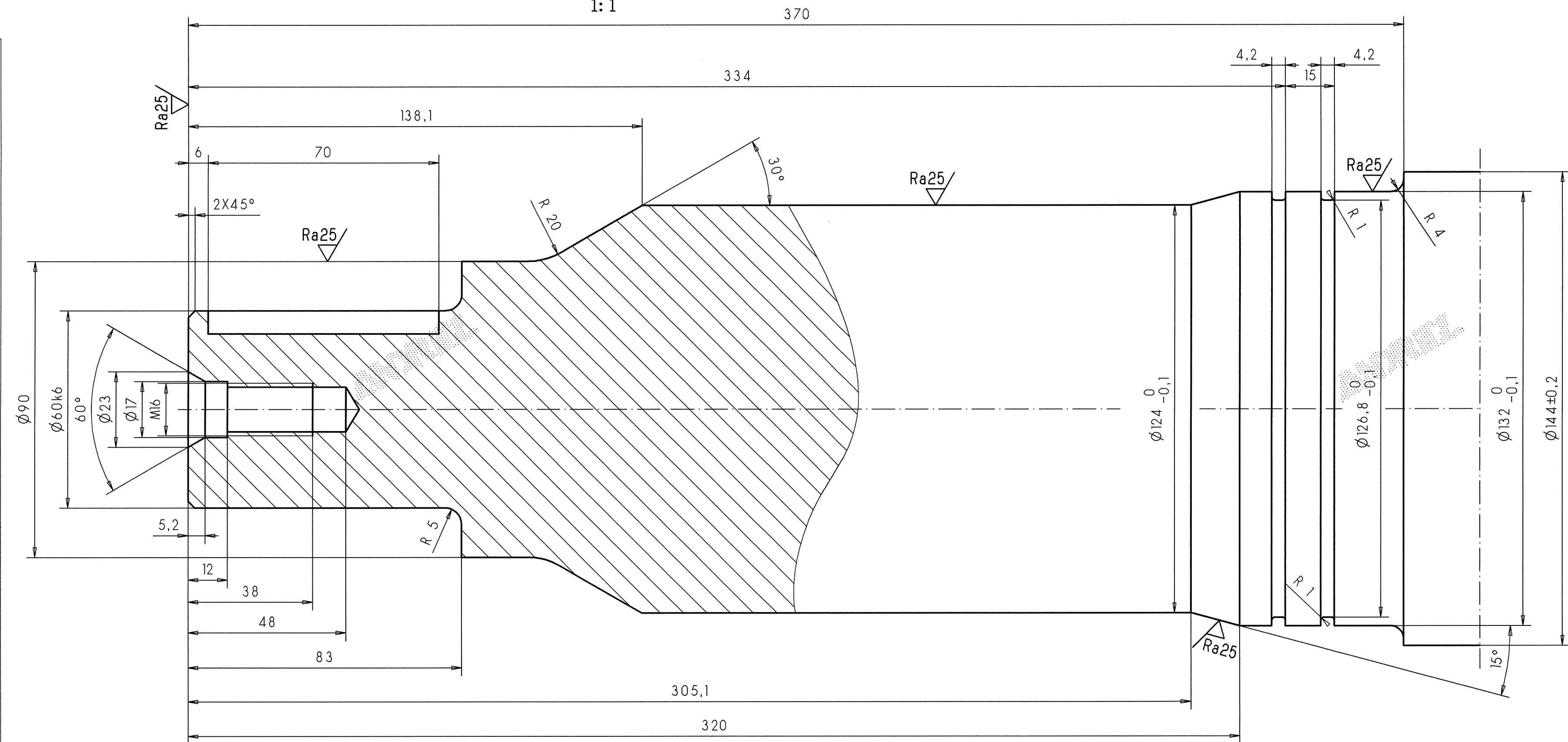
detail X
1: 2

detail Y
1: 2



detail W
1: 1

detail Z
1: 1



bevel edges

not specified radii R=1,6 mm

static and dynamic balanced!
admissible unbalance max. 2,5 mm/kg
(Revolutions max.: 1000 Rpm)

COLD ROLLING STEEL PLANT
DWG No. SHEET OF ASSEMBLY DWG No. MARK
DWG No. PAGE REV.

Item	Material	Quantity	Unit	Remarks
6 H7	0.012	0.000		
18 P9	0.018	0.000		
135 H8	0.000	0.250		
120 K6	0.025	0.000		
6 R6	0.021	0.000		
60 K6	0.002	0.000		
fit size				
tolerance				

Benennung/Title
WELLE FUER BUERSTWALZE
SHAFT FOR BRUSH ROLL

Gruppen-Nr./Group Number
40202

0 OK 99635

0 OK 99635

0 OK 99635